



Milnerton Ridge Neighbourhood Watch

MINUTES: Joint MRRA & MRNW Meeting: 1 June 2015

AGENDA

MRRA

- Welcome
- 2nd Meeting minutes
- Empty Plots
- Cape Radio Flyers
- General
- Next Meeting Date

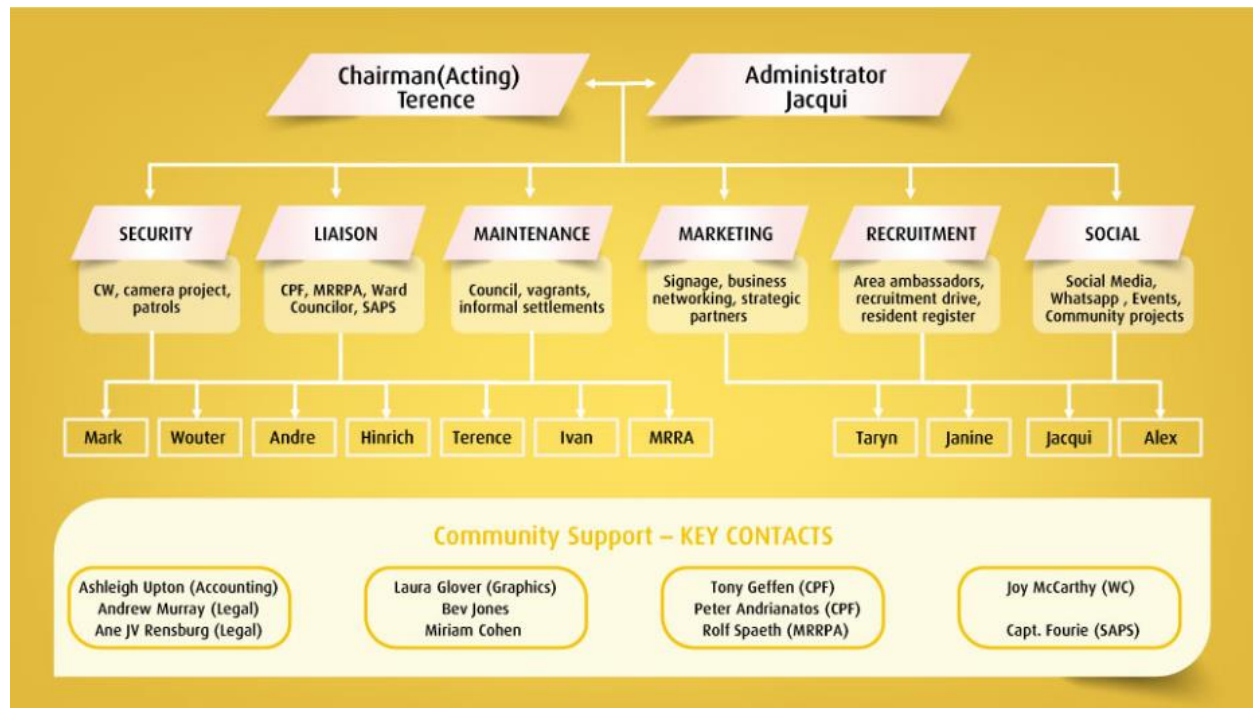
MRNW

- Introduction
- Liaison – SAPS/CPF
- Marketing, Recruitment & Social
- Security
 - Why Crimewatch
 - Crime Stats
 - Patrols
 - Camera Project

Milnerton Ridge Ratepayers Association – Minutes attached separately

Milnerton Ridge Neighbourhood Watch (MRNW)

Introduction



VISION:

To be an active community initiated role player in making Milnerton Ridge a safe place to live in. Thus improving our lifestyle and reducing fear of crime in our daily lives.

MISSION:

- To voluntarily work together to create a **safe** neighbourhood
- **Unify** the community
- Keep the neighbourhood **beautiful** and aesthetically pleasing

What does being part of the Neighbourhood Watch mean?

- Does **NOT** mean that you have to ACTIVELY 'patrol' – this is purely voluntary;
- **DOES** mean watching out for your neighbours;
- Will help us to **UNIFY** the neighborhood to ensure safety for us all, and to let all criminals - even those that may live among us - know that we will not tolerate their presence;
- **NO COST** involved other than voluntary signage for the house and vehicle ID stickers.

Liaison – SAPS/CPF

Mark and Terence are key role-players in keeping an open relationship between residents of Milnerton Ridge and SAPS, using the CPF as the conduit between the entities.

There are a few initiatives we as a neighbourhood are encouraged to participate in and the NW will be collaborating with the CPF as far as possible to facilitate this.

Below is a diagram which depicts the community needs and who will be partners in addressing these needs and how some of these them will be addressed. A CPF/NW workshop will be held on Saturday 6 June 2015 to figure out the best ways of approaching these projects.

COMMUNITY NEEDS	PARTNERSHIPS	PROJECTS
SUBSTANCE ABUSE (ALCOHOL/DRUG)	Social Workers AA/Drug Rehab (RAEL) CPF SAPS/Law Enforcement	Drug Rehab Clinic (RAEL) Alcoholics Anonymous (AA) Run Youth Projects Involve Churches
GANGSTERISM	SAPS NPO/NGO Law Enforcement	Run Youth Projects Involve Churches
SOCIAL/ECONOMIC	Councillors NGO/NPO CPF Ratepayers / Residents / Home Owners Association	Blanket & Beanie Drive for Winter Soup Kitchen Clothing Bank
DOMESTIC VIOLENCE	Social Workers SAPS CPF	Pamphlet Drive Talks on Domestic Violence and Children Rights
ENVIRONMENT eg Broken Window	City of Cape Town Councillors CPF Ratepayers / Residents / Home Owners Association	Charl Viljoen Broken Windows Project NHW clean-ups
PROPERTY CRIMES	SAPS NHW Security Companies	Open Days Pamphlet Drive
SAFE ROADS eg Taxi/Speed	SAPS Traffic/Metro/Law Enforcement Ratepayers / Residents / Home Owners Association Neighbourhood Watches (NHW)	Traffic Calming measures Traffic visibility VCP's
VISIBLE POLICING	SAPS Metro/Law Enforcement	VCP's

Marketing, Recruitment & Social

Past

At the beginning of 2014, Alex and Jacqui started a Facebook page for the Milnerton Ridge and Royal Ascot areas. They wanted to start breaking down barriers between neighbours – who were becoming more and more insular.

A few months later, one of the neighbours was attacked in their home and couldn't do anything but stand outside their home screaming for help. They had just moved in and knew no-one in the area.

This led the start of the Whatsapp Groups. The reasoning behind the groups is that if anyone in the community needs help, one message would potentially reach hundreds of people within a split second.

Subsequent to this, a few neighbourhood meetings were planned – with the focus being on the camera project that was started many years ago by Crimewatch. However, there was no clear direction at these meetings and nothing much was happening other than wanting to extend the membership of the Whatsapp groups. A call was made to the general public for interested parties wanting to form a committee to see what could be done about giving the community some sort of direction.

In parallel to all of the above, the existing Neighbourhood Watch was struggling to gain membership and interest. The Chairman and Secretary of that period decided to give it up as a lost cause after 2 years of trying to get things off the ground.

The above-mentioned interested group of people decided to resurrect the Neighbourhood Watch, which was announced at another general meeting in January 2015. The team was introduced to all and the **NEW NW** was born.

Present

Our main focus these last few months has been

- to complete Stage 1 of the camera project; and,
- to encourage community members to join the watch.

We've had many committee meetings to determine how to approach these tasks and have been to multiple meetings with the CPF to figure out our role in general. These are our main achievements to date:

- We have grown our member base from the original +- 28 original members to close on 160;
- We have almost 270 members on 5 Whatsapp groups and about 80 on a Social Whatsapp group;
- We have almost 625 followers on our Facebook page;
- We have a dedicated interactive website aimed at our community alone - thanks Laura of **PixelZoo**;
- We have new logos, banners, signs, stickers, jackets, bibs, torches and bicycles – thanks again to Laura of **PixelZoo** for the design of such, **LA Numberplates** for some fun sticker sponsorship, **Crimewatch** for sponsorship of car magnets, **City of Cape Town** for our jackets, 4 torches and 2 bicycles, and **Design your Sign** for the banners;
- We also have been offered the use of a store room – as soon as this has been made waterproof and secure, we can move in;
- Most importantly and it wasn't even one of our main goals – we have about 35 people who are keen to patrol the neighbourhood and we started with those a few weeks ago. More about this later.

We have come a long way!

Other than the security aspect, we are also still focused on other community initiatives.

- Doggy Date night still happens every Thursday evening in Clairwood Park.
- We're still looking into cost-effective recycling options – please complete the questionnaire on our website so we can get an idea of interest. So far we know of about 8 people who are keen, which is not a viable number at the moment.
- We're planning a Xmas in July fund-raising event – please save this date: 24 July 2015!

Future

- Social events
- Fund raisers
- Approach corporates and other businesses to assist with sponsorship
- Grow the membership base
- First Aid, Self-defense courses for residents
- Neighbourhood clean-ups
- Supporting local charity
- Vlei educational walks

Security

Why Crimewatch?

We covered our reasons for our reasoning behind this at our meeting in January, but to recap:

- Have approx. 285 out of 460 households as their clients;
- Proactive – want to resolve crime, grow and develop;
- Recognise and acknowledge the need to work with residents and groups;
 - Increased dominance means more dedicated services for us;
 - Customer Service Charter, focussed around Service Excellence to MRNW members;
 - Established camera network, unlike any other Security Agency;

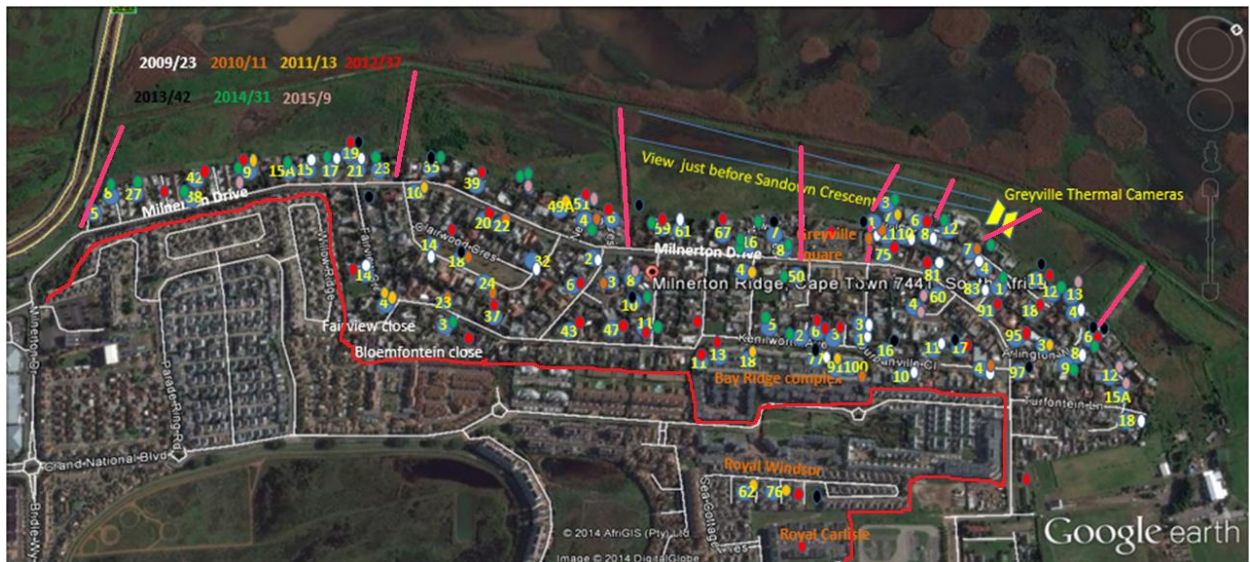
Crime Stats

Stats as such are only shared with MRNW Members in separate e-mails.

To get an overall idea of crime in the area (as per the stats gather by Crimewatch), please refer to the picture below.

Double these incidents to get an idea of crime that includes incidents that go unreported – the picture will be a lot messier.

Note that although about 60-70% of crime happens along the vleij, the internal residents are not immune.



Patrols

Consist of the following categories:

- **Eyes & Ears** - Passive
Keeping an eye on the suburb during normal day to day activities
- **Active** – foot and car
Car patrols
Consist of at least two people
Foot Patrols
Consist of 3 or more people
Dogs on leads
- **Power Patrols**
Knowledge sharing with other Neighbourhood Watches – assisting SAPS and neighbouring suburbs with their patrols.

As mentioned before, patrols are not the focus of the NW but they are gaining in popularity. As Hinrich mentioned at the meeting, patrols are a great way to get exercise. 10,000 steps is the foot patrol goal – one ends up being fitter as well as stating a presence!

Please register on the website and once your MRNW membership has been confirmed, your availability can be recorded on our new **BOOK A PATROL SLOT** facility.

<http://www.mrnwatch.org.za/book-a-patrol-slot/>

If you are already a MRNW member and are on the Patroller Planning Whatsapp Group, chances are good that your userid has already been created. You will have received an e-mail stating this with a default password – please change this password as soon as possible. E-mail jacqui.pember@mrnwatch.org.za for any issues you may be having with the use of the website.

Andre then proceeded to point out the following:

- Participants to wear reflective bibs & use car magnets – visibility patrols only
- Patrols to follow designated routes
- Age restriction: only 18-84 allowed
- No-one under the influence of alcohol
- OB number to be obtained from SAPS
- Vehicle access on vlei strictly controlled by **Wouter** – no unauthorized vehicles allowed
- No confrontation – call for assistance from Crimewatch or SAPS

Camera Project

Objectives

- Create awareness of the benefits of 24/7 monitored CCTV, in reducing crime in the greater Milnerton Ridge area;
- Intelligent Policing – **DETERRENT & PREVENTION**
- Enable the community to assist with monitoring cameras remotely;
- Raise capital to install cameras all the way around the suburb

The benefits of cameras was once again demonstrated. There is no doubt that the installed cameras are an excellent deterrent.

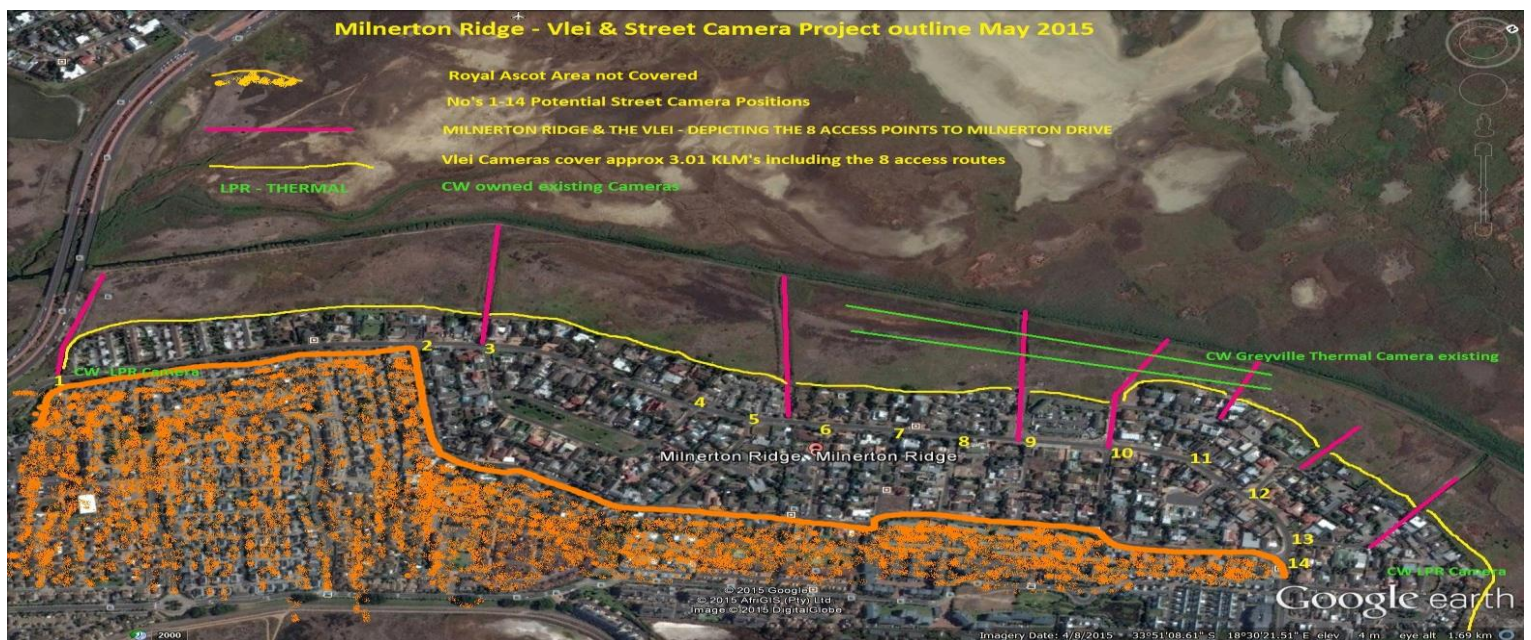
With the installation of **Stage 1** complete, covering 9-29 Milnerton Drive, pressure is going to mount on houses further along the vlei towards Theo Marais park, as only one set of cameras is installed in that area and criminals will soon cotton on to this fact.

Stage 2 is currently in progress with Aintree 1, 2 and 3 being encouraged to participate. To date Aintree 3 have bought in totally and we await decisions from Aintree 2.

Stage 3 covers homes between 31 Milnerton Drive and Sandown Park. The uptake in this area is extremely slow and the focus will soon be shifted to homes towards the end of Milnerton Drive.

All interested parties are encouraged to form groups of like-minded security conscious people and asked to contact Mark Lindsell mark.lindsell@mrnwatch.org.za for help in getting their installations started.

The following picture represents the vlei and access points. The immediate objective should be to install cameras at the very least along these points. In addition, if cameras are installed at the points marked by yellow numbers, we would be looking at very good coverage and visuals that can be monitored 24/7 by residents in the area, as well as the Crimewatch Control room.



To end off the meeting, Mark covered the following FAQ's:

- **I am interested in getting Cameras in my area – how do I do this?**
 - Please contact Mark or Wouter
 - Pricing is very dependent on each location
- **How do we know CW are competitive?**
 - 2 quotes obtained
 - Intellisec audit
- **Why don't each of us put in our own cameras at our own cost?**
 - Who will do the monitoring and alerting?
 - You can link to system if same brand of cameras, – some individuals have already
 - Cost of Wireless Network expensive.
- **Why don't CW install the cameras at their cost?**
 - CW do not want the cameras as such and certainly can't afford it
- **Is there a cost to Monitoring?**
 - The **current** cameras cost approx. R9,600 per month to monitor.
 - **88** people in the Ridge fund this monthly cost at the moment.
 - The additional cameras will incur a bigger cost and so we need to increase the amount of income to cover it.
 - It is critical that we grow the membership of CW in the process to help deal with this
 - The more members – the more resources dedicated to MR & the more cameras the better the intelligence & quicker the response

MRNW please for assistance with a few items

As we are still a new organization, there are a few things we need to get us off the ground...

There are about 160 members to date, across approximately 110 households. We have sold 56 house signs, which means that there are about 50 homes that are not displaying the NW signage. We would like to appeal to all members to purchase their **signs and vehicle stickers**. Please e-mail alex.radlinger@mrnwatch.org.za to arrange for the purchase and delivery of these. We make a small profit on the sale of these items, which means we can cover the cost of further **marketing** materials and various other things that are required, such as torches, more bibs, consumables such as drinks for patrollers, hosting costs for Power Patrols, electricity for the store room, etc.

As mentioned earlier, we have been given the use of a **storeroom** in the area. This room needs to have **2 new doors** and some **roofing repairs** to make it watertight. In addition, we need to make it as secure as possible. Rome Roofing has offered their assistance with the roof, so we are looking for a few donors to help sponsor a couple of new doors. If 50 people each offer R50, we would be covered – please could you consider helping us with this request? You can e-mail jacqui.pember@mrnwatch.org.za on this one.

Radios – cellphone coverage in the Milnerton Ridge area is abysmal, so we are vulnerable when needing assistance. We've had a few instances where phone calls have been made to the Crimewatch Control room and they have not been able to hear where we are and what is needed. This potentially puts our lives at risk. One of our residents has contributed R1,000 towards the kitty for purchasing at least 4 Motorola radios which we can use to communicate with Crimewatch and SAPS, and we appeal to others for assistance with this. The cost of this is approximately R1,300 per radio – to be confirmed with a potential supplier. If anyone is able to help, please contact Andre on e-mail address andre.van.schalkwyk@mrnwatch.org.za.

A big one on our wish list is a pair of **Flir thermal binoculars**. With this in our hands, no-one will be able to hide out very easily on the vlei. As you all know, most of our night time criminal activity comes in from the vlei side and catching these guys will be much easier with the help of the binoculars. The amount we need to raise for these is about R30,000. We will be having various fund raisers with some of the money going towards this piece of equipment but any person who specifically wants to make a donation towards the cost of this is most welcome to. Please contact Wouter on e-mail address: wouter.groenewald@mrnwatch.org.za for further information.

In closing...

Thank you to all those who attended the meeting, in particular to Peter Andrianatos Chairman of the CPF Sub Forum 3, Captain Fourie of SAPS and Karen Fourie of the CPF.

The next meeting date to be advised.